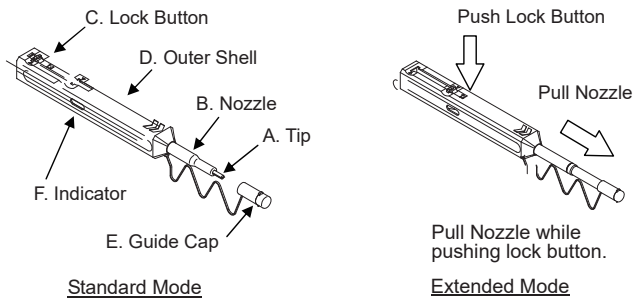


1 External function description



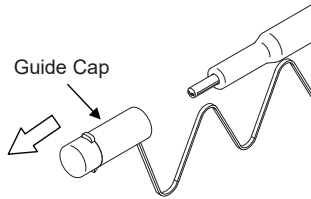
No.	Part Name	Function
A	Tip	Lead the cleaning cloth to the optical connector end face.
B	Nozzle	Lead tip to the optical connector end face.
C	Lock Button	Push the button to extend and contract the nozzle.
D	Outer Shell	Push the outer shell to clean the connector.
E	Guide Cap	Acts as dust cap or cleaning adapter for connector plug.
F	Indicator	Provides indication of remaining cleaning cloth.

2 Identification of remaining cloth

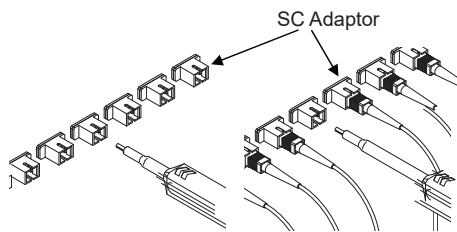
	View of Indicator	View of the Nozzle end
Full	Cloth (White)	Tip (Black) Cloth (White)
Little	Cloth (White) Red	Tip (Black) Cloth (White)
Empty	Red	Tip (Black) No Cloth (Black)

3 Connector inside adaptor

1. Remove Guide Cap from the device.



2. Insert tip of cleaner into SC Adaptor.

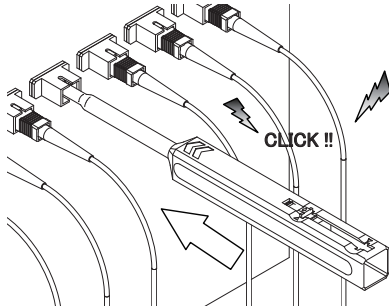


Standard Mode

Extended Mode

Note: This drawing shows only SC, but this product can clean ST and FC too.

3. Push the Outer Shell to start cleaning the SC connector end face. A "click" sound indicates end of cleaning process. Close the cover after use.



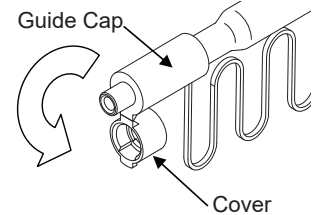
Be careful not to slant the Cleaner SC while inserting into the adapter.

Do not overly exert force during insertion as this may cause damage to both the connector and the Cleaner SC.

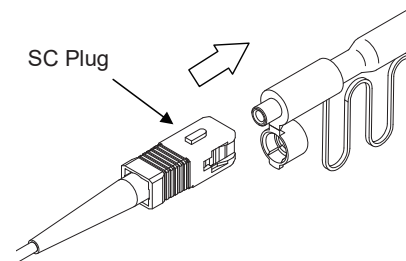
If pushing Outer Shell is inhibited, remove Cleaner SC from adapter and ensure that there is no sizeable debris inhibiting the cleaning process.

4 Connector plugs alone

1. Open the Cover on the Guide Cap.

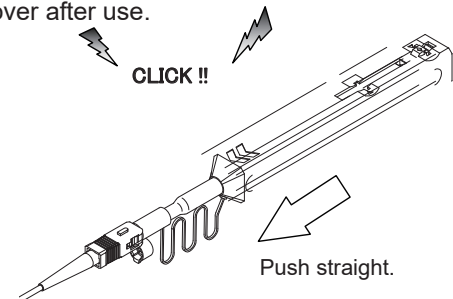


2. Insert SC connector into the Guide Cap.



Note: This drawing shows only SC, but this product can clean ST and FC too.

3. Push the Outer Shell to start cleaning the SC connector end face. A "click" sound indicates end of cleaning process. Close the cover after use.



Be careful not to slant SC connector while inserting into the Guide cap.

Do not overly exert force during insertion as this may cause damage to both the connector and the Cleaner SC.

If pushing Outer Shell is inhibited, remove Cleaner SC from adapter and ensure that there is no sizeable debris inhibiting the cleaning process.

5 Product description

KOC-250 optical fiber cleaning pen, it replaces the traditional cotton swab + alcohol, it can remove the oil and dust on the fiber connector ferrule/device/module with a simple touch of the cleaning pen when using it, and it can be used continuously and guaranteed effective cleaning effect. Widely used in optical network maintainers, engineering companies or equipment manufacturers, device manufacturers, the advent of the optical fiber cleaning pen easily solves the problem of cleaning the core of the optical fiber adapter!

6 Product features

- One-click optical fiber connector cleaner
- Suitable for 2.5mm SC/ST/FC/E2000(APC & UPC)
- More than 800 cleaning times
- Effectively remove all kinds of oil and dust
- To avoid contamination of the cleaning pen, it is equipped with a dust cap

7 Product parameter

Product	KOC-250
Material	Resin
Cleaning ability	Effective cleaning up to 99%
Cleaning times	ore than 800 times
Scope of application	SC/ST/FC/E2000(APC/UPC) 2.5mm Optical fiber connector (male and female)
Length	175*18*18mm

8 Safety precautions

Please read all instructions and warnings before using this product. Irregular use will cause damage to the product or personal safety.

- 1) Do not attempt to disassemble as this can cause damage to the device.
- 2) Do not re-use cleaning cloth as this will eliminate its cleaning ability.
- 3) Do not touch the cleaning cloth as this will cause contamination.
- 4) Do not pull the cleaning cloth, use only the device body.
- 5) Do not use this cleaner when the cloth is empty, as this can cause damage to the connector.
- 6) Do not expose device to direct sunlight, high temperature or high humidity.
- 7) The cover on the guide cap should be closed at all times when device is not in use.

Standard configuration

- Packaging carton, cleaner, certificate

Contact us:

KOMSHINE TECHNOLOGIES LIMITED

TEL: +86 25 66047688

Mail: info@komshine.com

Add: 2F Bldg. D Qinheng Tech. Pk. Nanjing, JS, 210001, China

Web: www.komShine.com

